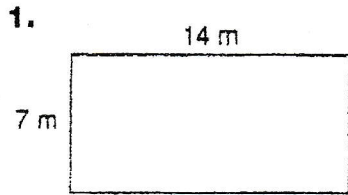


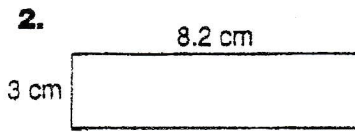
$$A = bh \text{ aka } l \cdot w$$

$$A = \frac{1}{2}bh$$

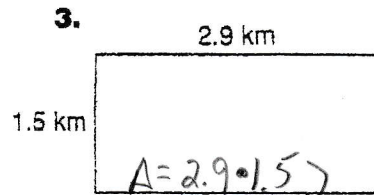
Find the area of each rectangle.



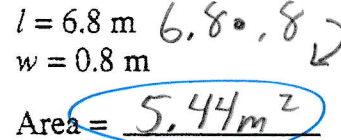
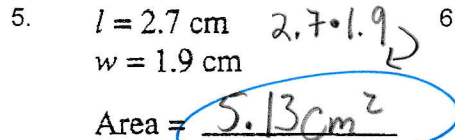
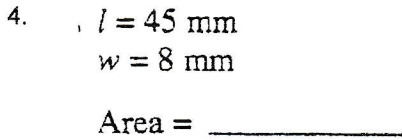
Area = _____



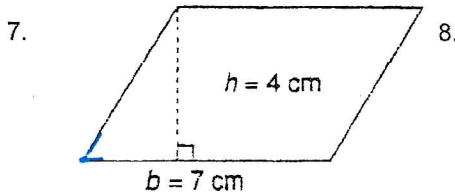
Area = 24.6 cm^2



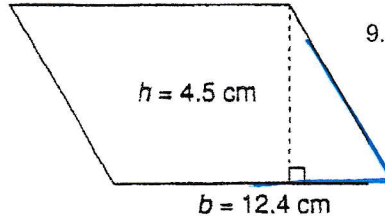
Area = 4.35 km^2



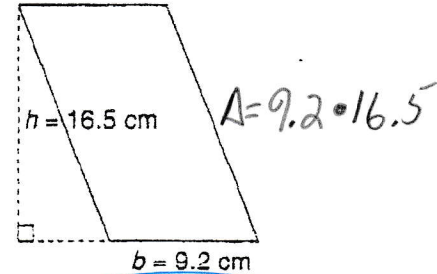
Find the area of each parallelogram.



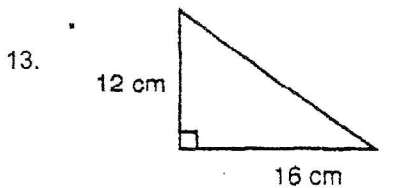
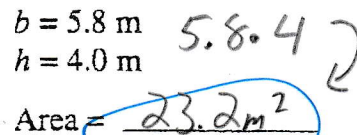
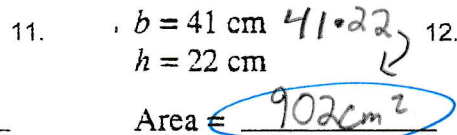
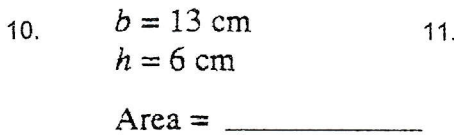
Area = _____



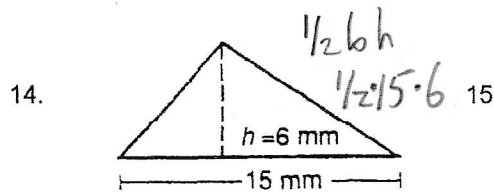
Area = 55.8 m^2



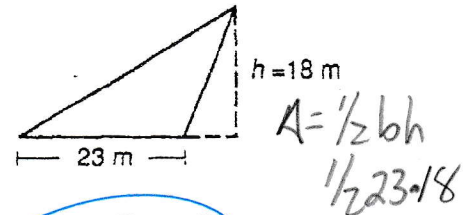
Area = 151.8 cm^2



A = _____



A = 45 mm^2



A = 207 m^2

Find the area of each shaded region. Big-Small

