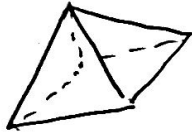
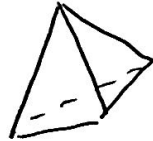


Ch 12 Volume of a Pyramid

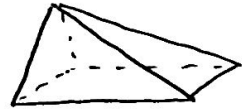
Pyramid - sides are triangles and the base can be any polygon



Square
Pyramid



Triangular
Pyramid



Rectangular
Pyramid

Volume

Divided
by

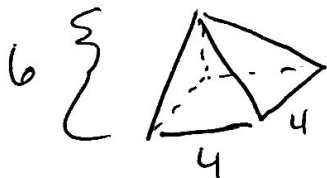
$$\frac{3 \text{ pyramids}}{3} = \frac{1 \text{ prism}}{3}$$

Pyramid = $\frac{1}{3}$ prism

$$V_{\text{prism}} = Bh$$

$$V_{\text{Pyr.}} = \frac{1}{3} Bh$$

example:



$$V = \frac{1}{3} Bh$$

$$V = \frac{1}{3} (4 \cdot 4) 6$$
$$= 32 u^3$$